



## AUTHORIZATION TO MARK

This authorizes the application of the Certification Mark(s) shown below to the models described in the Product(s) Covered section when made in accordance with the conditions set forth in the Certification Agreement and Listing Report(s). This authorization also applies to the Multiple Listee model(s) identified on the correlation page of the Listing Report.

This document is the property of Intertek Testing Services and is not transferable. The Certification Mark(s) may be applied only at the location of the Party Authorized to Apply Mark.

**Applicant:** ECO BIERZO COMPOSITE SL  
Poligono industrial La Rozada, Parcela,2, calle Isaac Prado Bodelón  
Paradones, Toral de los vados, Leon 24516  
Spain

**Contact:** Diego Luciano Galban Hierro

**Phone:** +34 987 553 117 (545)

**Email:** d.galban@stacbond.es

**Party Authorized to Apply Mark:** See following page(s)

**Evaluation Center:** Intertek (Elmendorf)

**Client Number:** 438052

Authorized By:   
Jean-Philippe Kayl, Director of Certification

Intertek Testing Services NA, Inc.  
545 E. Algonquin Road, Ste H., Arlington Heights, IL 60005 USA  
Phone: 847-439-5667 Fax: 847-439-7320



This document supersedes all previous Authorizations to Mark for the noted Report Number.

This Authorization to Mark is for the exclusive use of Intertek's Client and is provided pursuant to the Certification agreement between Intertek and its Client. Intertek's responsibility and liability are limited to the terms and conditions of the agreement. Intertek assumes no liability to any party, other than to the Client in accordance with the agreement, for any loss, expense or damage occasioned by the use of this Authorization to Mark. Only the Client is authorized to permit copying or distribution of this Authorization to Mark and then only in its entirety. Use of Intertek's Certification mark is restricted to the conditions laid out in the agreement and in this Authorization to Mark. Any further use of the Intertek name for the sale or advertisement of the tested material, product or service must first be approved in writing by Intertek. Initial Factory Assessments and Follow up Services are for the purpose of assuring appropriate usage of the Certification mark in accordance with the agreement, they are not for the purposes of production quality control and do not relieve the Client of their obligations in this respect.

<b>Testing Standard(s):</b>	CAN / ULC S134 (2013) (R2018), NFPA 285 (2019), CAN / ULC S102 (2018), ASTM E84 (2022)
<b>Product:</b>	ECO BIERZO COMPOSITE, SL - STACBOND® FR

**ATM for Report:** G103816489, G103972804, H2419.01-121-24,  
I6239.03-121-24

**ATM Issue Date:** 1/27/2025

**Listing Section(s):** BUILDING PANELS  
BUILDING MATERIALS WITH SURFACE BURNING CHARACTERISTICS

**CSI Code(s):** 07 42 13.23 Metal Composite Material Wall Panels

**Description:**

**Product Description:**

STACBOND® FR is a 4 mm thick, metal composite material consisting of two nominally 0.50 mm aluminum skins, bonded to both surfaces of an extruded fire retardant core of thermoplastic resins and mineral charge.

#### FLAME SPREAD RATINGS

Test Standard	Flame Spread	Smoke Development
CAN/ULC-S102	≤25	≤50
ASTM E84	≤25	≤450

#### FIRE RATING

Test Standard	Rating/Results	Design Number
CAN/ULC-S134	Meets conditions of acceptance	STAC/MCMWP 25-01
NFPA 285	Meets conditions of acceptance	STAC/MCMWP 30-01

Reference the Design Listing for details.

**Party(s) Authorized by Manufacturer To Apply Mark:**

ECO BIERZO COMPOSITE SL (Poligono industrial  
La Rozada, Parcela,2, calle Isaac Prado Bodelón,  
Parandones, León)  
Poligono industrial La Rozada, Parcela,2, calle  
Isaac Prado Bodelón  
Parandones, León 24516  
Spain  
Contact: Antonio Lopez Merino  
Phone: 0034 987553117  
Email: a.merino@stacbond.es

**Party(s) Authorized by Other Parties To Apply Mark:**

None

## DRAWING INDEX

STAC/MCMWP 25-01

STAC/MCMWP 30-01

## STAC/MCMWP 25-01



Division 7 – Thermal and Moisture Protection  
07 42 00 Wall Panels  
07 42 13.23 Metal Composite Material Wall Panels

**SISTEMAS TÉCNICOS DEL ACCESORIO Y COMPONENTES, S.A.**  
Design No. STAC/MCMWP 25-01  
EXTERIOR WALL SYSTEMS  
STACBOND® FR  
CAN/ULC-S134 - Pass

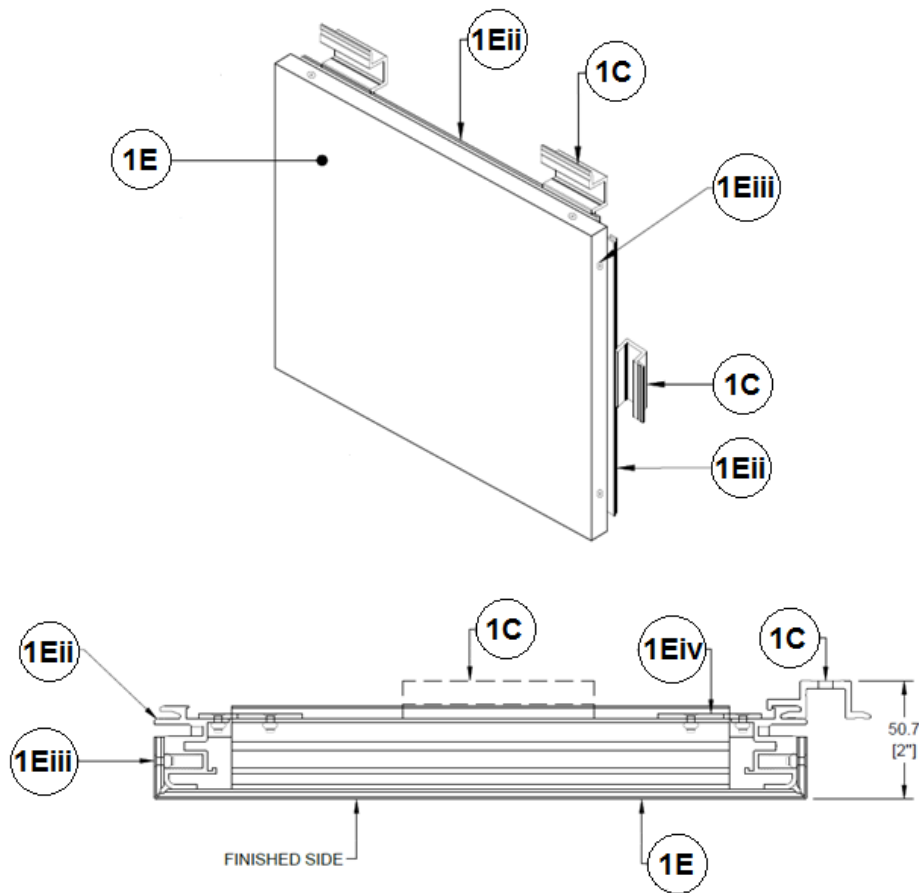


Figure 1. General Assembly

Date Issued: October 28, 2019

Page 1 of 3

Project No. G103816489

Version: 02 August 2017

SFT-BC-OP-19I

STAC/MCMWP 25-01 (2 OF 3)



Division 7 – Thermal and Moisture Protection  
07 42 00 Wall Panels  
07 42 13.23 Metal Composite Material Wall Panels

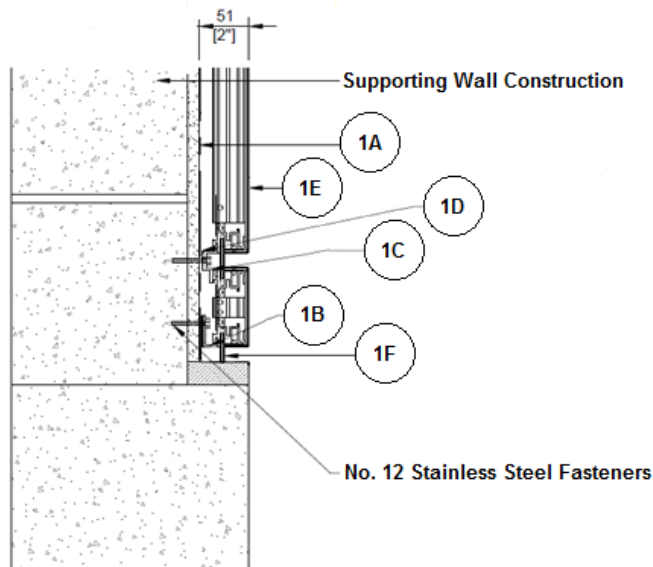


Figure 2. Starter Detail

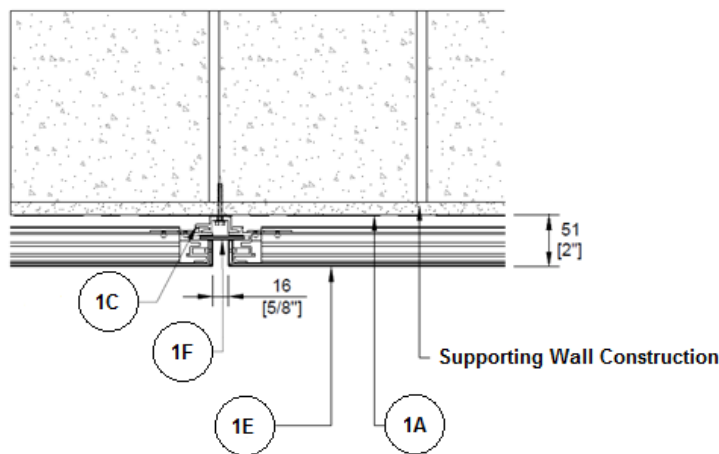


Figure3. Joint Detail

## STAC/MCMWP 25-01 (3 OF 3)



Division 7 – Thermal and Moisture Protection  
07 42 00 Wall Panels  
07 42 13.23 Metal Composite Material Wall Panels

1. **EXTERIOR WALL SYSTEM:** Reference Figures 1 through 3. The system described herein represents the construction as tested or evaluated to the standardized test conditions of the referenced standard. Install FC100 System by Panneaux 3D onto the supporting wall construction in accordance with the manufacturer's installation instructions and in accordance with the following requirements:
  - A. **WATER RESISTIVE BARRIER (WRB):** Install Vapro Shield® WrapShield® IT onto the supporting wall construction in accordance with the WRB manufacturer's instructions.
  - B. **J-Starter:** Install Panneaux 3D FC100 J-Starter aluminum extrusion using minimum No. 12 stainless steel screws of the appropriate type and length for the supporting wall construction.
  - C. **MOVEABLE ALUMINUM CLIPS:** Install Panneaux 3D FC100 moveable aluminum clips (half and full clips) using minimum No. 12 stainless steel screws of the appropriate type and length for the supporting wall construction.
  - D. **PVC TAPE:** Use PVC tape to be supplied by installer, under J-Starter (Item 1B) and under Moveable Aluminum Clips (Item 1C).
  - E. **EXTERIOR WALL PANELS:** Install Panneaux 3D FC100 exterior wall panels fabricated using a route and return method with the components listed below:
    - i. **CERTIFIED MANUFACTURER:** Sistemas Técnicos del Accesorio y Componentes, S.A.  
  
**CERTIFIED PRODUCT:** Aluminum Composite Panel  
  
**CERTIFIED MODEL:** STACBOND® FR, 4 mm thick
    - ii. **PANEL FRAMING:** Panneaux 3D FC100 panel framing aluminum extrusion.
    - iii. **RIVETS:** Aluminum
    - iv. **CORNER STIFFENER:** Aluminum
  - F. **JOINT FILLER PANELS:** Use Panneaux 3D FC100 Joint Filler Panels fabricated with component listed below:
    - i. **CERTIFIED MANUFACTURER:** Sistemas Técnicos del Accesorio y Componentes, S.A.  
  
**CERTIFIED PRODUCT:** Aluminum Composite Panel  
  
**CERTIFIED MODEL:** STACBOND® FR, 4 mm thick

## STAC/MCMWP 30-01



Division 7 – Thermal and Moisture Protection  
07 42 00 Wall Panels  
07 42 13.23 Metal Composite Material Wall Panels

### SISTEMAS TÉCNICOS DEL ACCESORIO Y COMPONENTES, S.A.

Design No. STAC/MCMWP 30-01

#### EXTERIOR WALL SYSTEMS

STACBOND® FR

NFPA 285 - Pass

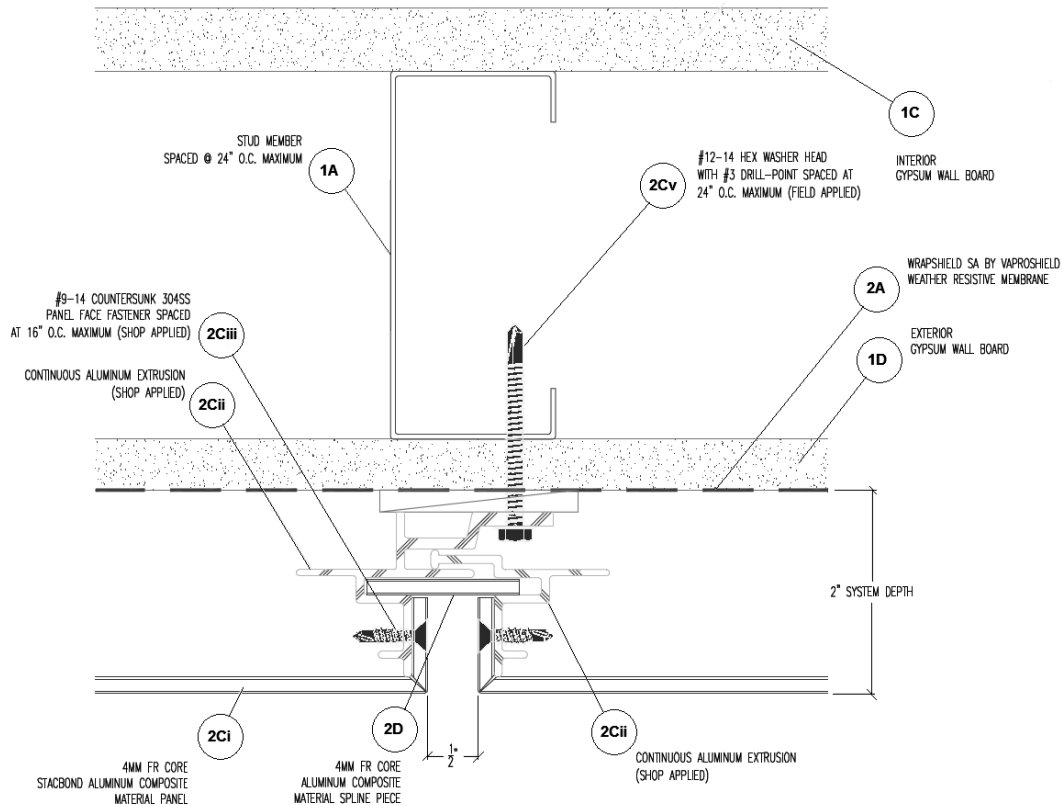


Figure 1. General Assembly

Date Issued: October 30, 2019

Page 1 of 5

Project No. G103816489

Version: 02 August 2017

SFT-BC-OP-191



STAC/MCMWP 30-01 (2 OF 5)



Division 7 – Thermal and Moisture Protection  
07 42 00 Wall Panels  
07 42 13.23 Metal Composite Material Wall Panels

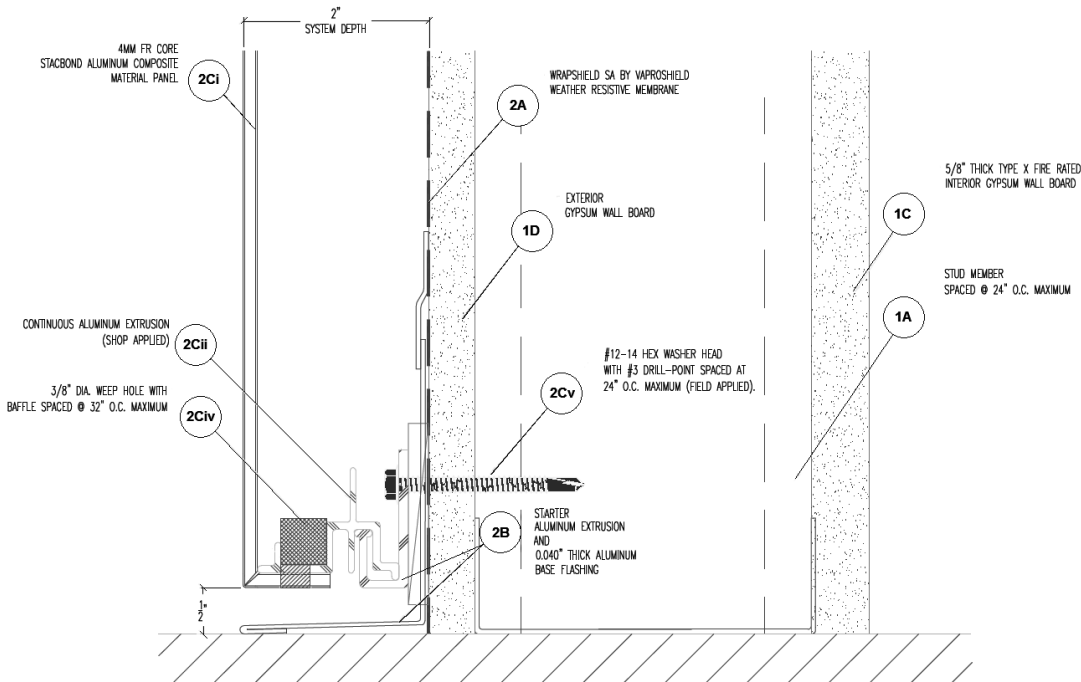


Figure 2. Starter Detail

## STAC/MCMWP 30-01 (3 OF 5)



### Division 7 – Thermal and Moisture Protection 07 42 00 Wall Panels 07 42 13.23 Metal Composite Material Wall Panels

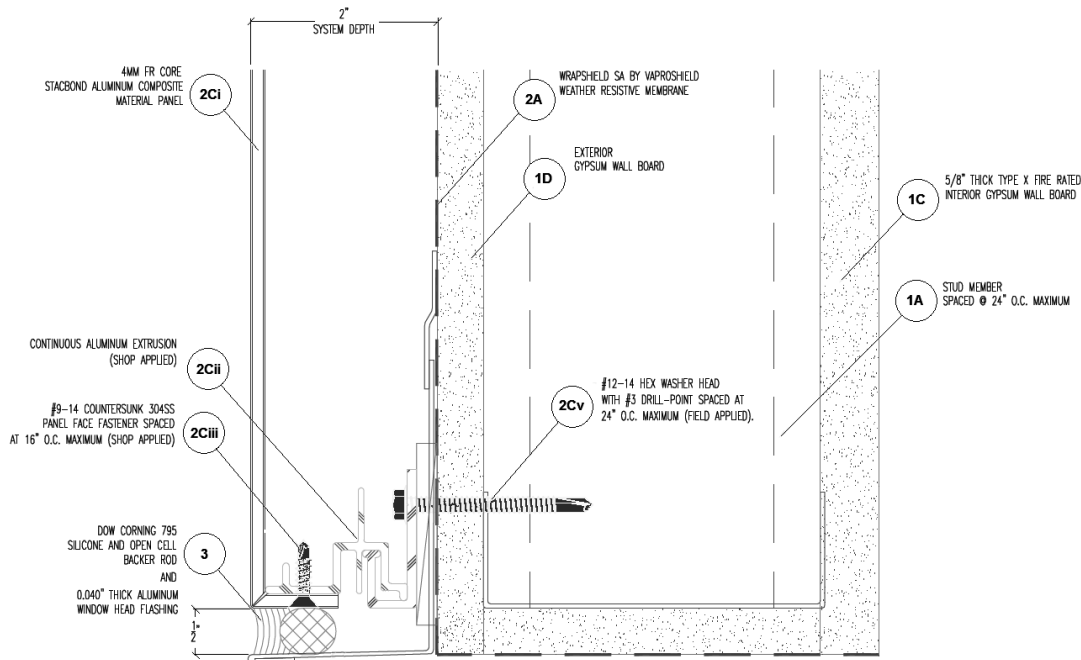


Figure 3. Joint Detail

**1. EXTERIOR BASE WALL ASSEMBLY:**  
Incorporate construction features of the exterior base wall assembly as described below:

**A. FRAMING:** Use minimum 3-5/8 in. deep, minimum 20 GA galvanized steel studs spaced maximum 24 in. on center (oc) fastened to minimum 3-5/8 in. deep, minimum 20 GA galvanized steel track. Attach the vertical framing to the track with one #6 x 1/2 in. long self-drilling, pan head fastener per stud flange.

**B. FLOOR LINE SAFING (NOT SHOWN):** Install minimum 4 pcf nominal density Intertek-

Certified mineral wool safing, minimum 8 in. deep at the floor line.

**C. INTERIOR GYPSUM:** Install one layer one layer of 5/8-in. thick, TYPE X gypsum board. Fasten the gypsum board to the steel wall framing (Item 1A) with #6 x 1-1/4 in. long, bugle head, self-drilling screws with a nominal spacing of 8 in. around the board perimeter and 12 in. in the field. Apply level two finish of vinyl or casein compound, in two coats over fastener heads and joints. Embed nominal 2 in. wide paper, plastic, or fiberglass tape in first layer of compound over the joints.

Date Issued: October 30, 2019

Page 3 of 5

Project No. G103816489

Version: 02 August 2017

SFT-BC-OP-191

## STAC/MCMWP 30-01 (4 OF 5)



Division 7 – Thermal and Moisture Protection  
07 42 00 Wall Panels  
07 42 13.23 Metal Composite Material Wall Panels

**D. EXTERIOR SHEATHING:** Install minimum 5/8 in. thick TYPE X exterior gypsum attached to the steel wall framing (Item 1A) with #6 x 1-1/4 in. long, bugle head, self-drilling screws with a nominal spacing of 8 in. around the board perimeter and 12 in. in the field.

**2. EXTERIOR CLADDING SYSTEM:** Reference Figures 1 through 3. Install 1500 rain screen cladding system by Miller Clapperton onto the exterior base wall assembly (Item 1) in accordance with the manufacturer's installation instructions and in accordance with the following requirements:

**A. WATER RESISTIVE BARRIER (WRB):** Install VaproShield® WrapShield® SA onto the supporting wall construction in accordance with the WRB manufacturer's instructions. Use 4 in. wide Black UV VaproShield® VaproTape™ to secure the WRB to the entire perimeter of the framed window opening.

**B. J-STARTER:** Install Miller Clapperton 1500 J-Starter aluminum extrusion at the base and window header using #12-14 hex washer head screws with #3 drill-point (Item 2Cv) spaced maximum 24 in. oc. Install minimum 0.040 in. thick aluminum flashing at base and at window header under the starter aluminum extrusion.

**C. EXTERIOR WALL PANELS:** Install Miller Clapperton 1500 rain screen exterior wall panels fabricated using a route and return method with the components listed below.

**i. CERTIFIED MANUFACTURER:** Sistemas Técnicos del Accesorio y Componentes, S.A.

**CERTIFIED PRODUCT:** Aluminum Composite Panel

**CERTIFIED MODEL:** STACBOND® FR, 4 mm thick

**ii. PANEL FRAMING:** Miller Clapperton 1500 rain screen panel framing aluminum extrusion.

**iii. PANEL SCREWS:** #9-14 countersunk stainless steel screws spaced maximum 16 in. oc used to fasten aluminum composite panels to panel framing (Item 2Cii).

**iv. WEEP HOLE BAFFLES:** spaced maximum 32 in. oc. along bottom of panels.

**v. WALL FASTENERS:** Fasten the Exterior Wall Panels to the Exterior Base Wall Assembly (Item 1) using #12-14 hex washer head screws with #3 drill-point spaced maximum 24 in. oc. Fastening locations shall correspond with the Exterior Base Wall Assembly Framing (Item 1A) locations.

**D. SPLINE PANELS:** Use Miller Clapperton 1500 rain screen spline panels at maximum 1/2 in. wide panel joints, these are fabricated from the component listed below:

**i. CERTIFIED MANUFACTURER:** Sistemas Técnicos del Accesorio y Componentes, S.A.

**CERTIFIED PRODUCT:** Aluminum Composite Panel

**CERTIFIED MODEL:** STACBOND® FR, 4 mm thick

## STAC/MCMWP 30-01 (5 OF 5)



Division 7 – Thermal and Moisture Protection  
07 42 00 Wall Panels  
07 42 13.23 Metal Composite Material Wall Panels

**3. WINDOW HEADER:** Frame the window opening with 20 GA galvanized steel track (Item 1A). Use minimum 0.040-in. thick aluminum flashing along the header as shown in Figure 3. Use open cell backer rod material and DOW Corning 795 silicone

sealant over the backer rods to fill the 1/2 in. joint between the exterior wall panel (Item 2C) and the aluminum flashing.

Date Issued: October 30, 2019

Page 5 of 5

Project No. G103816489

Version: 02 August 2017

SFT-BC-OP-19I